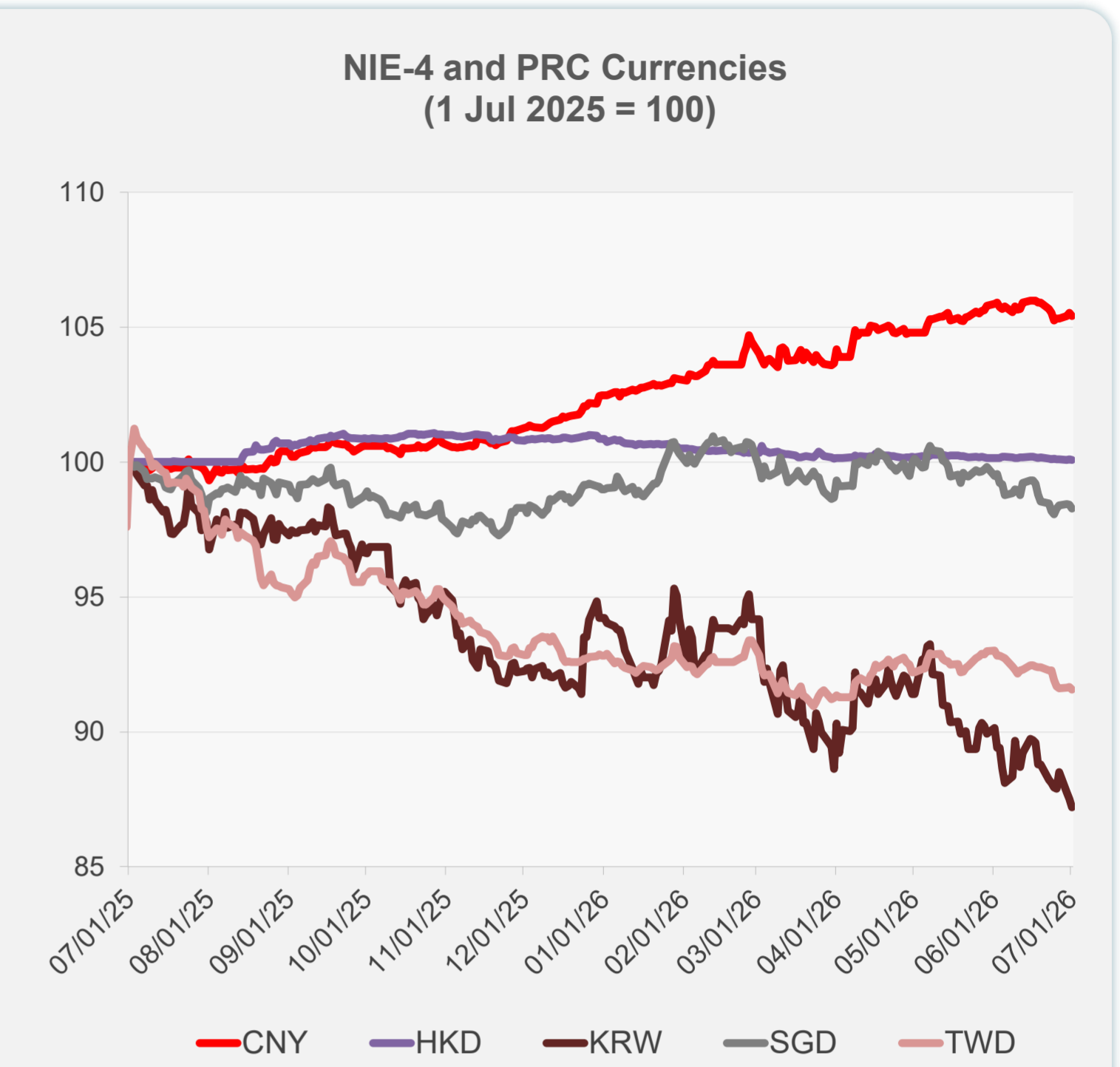
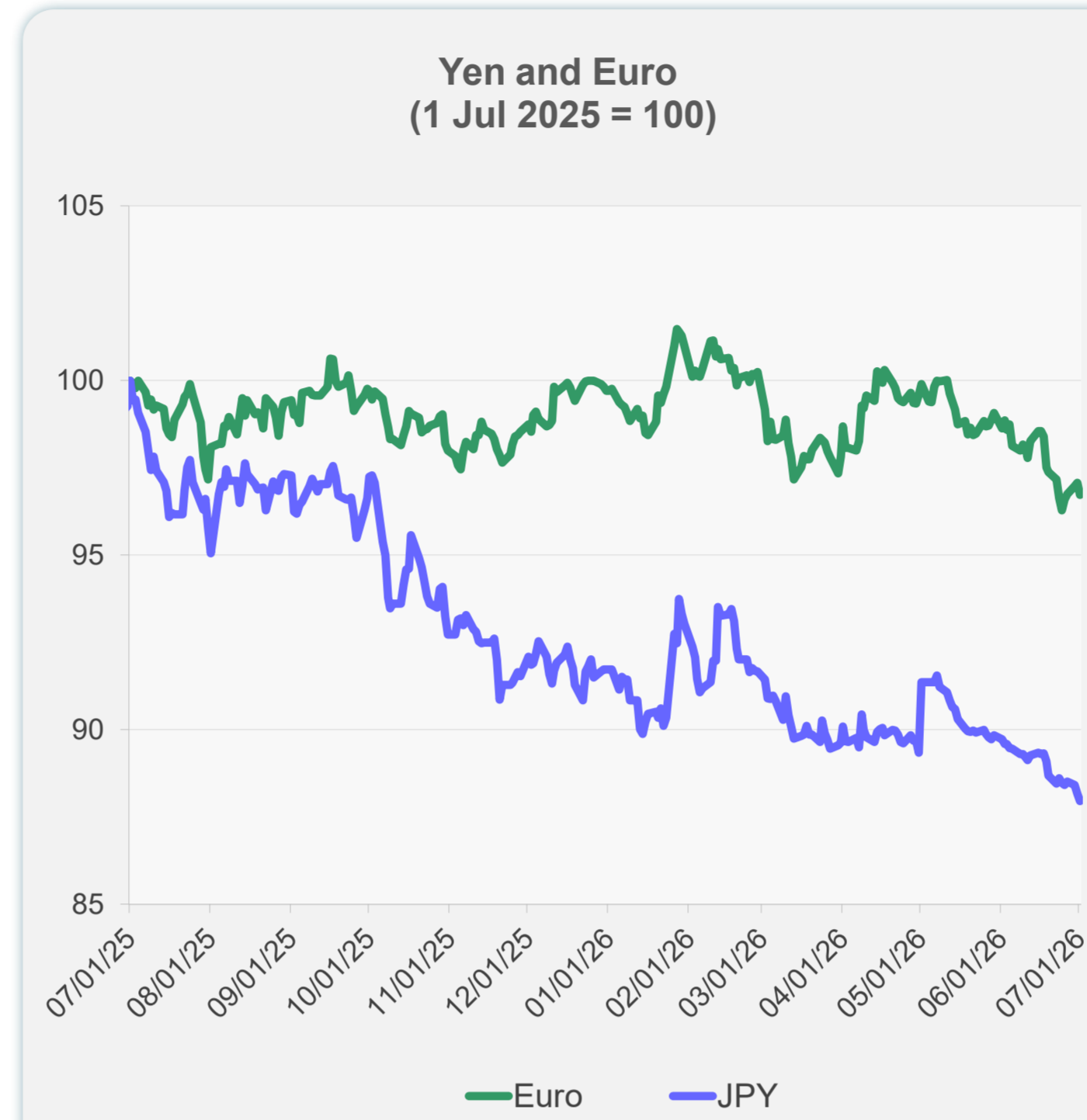
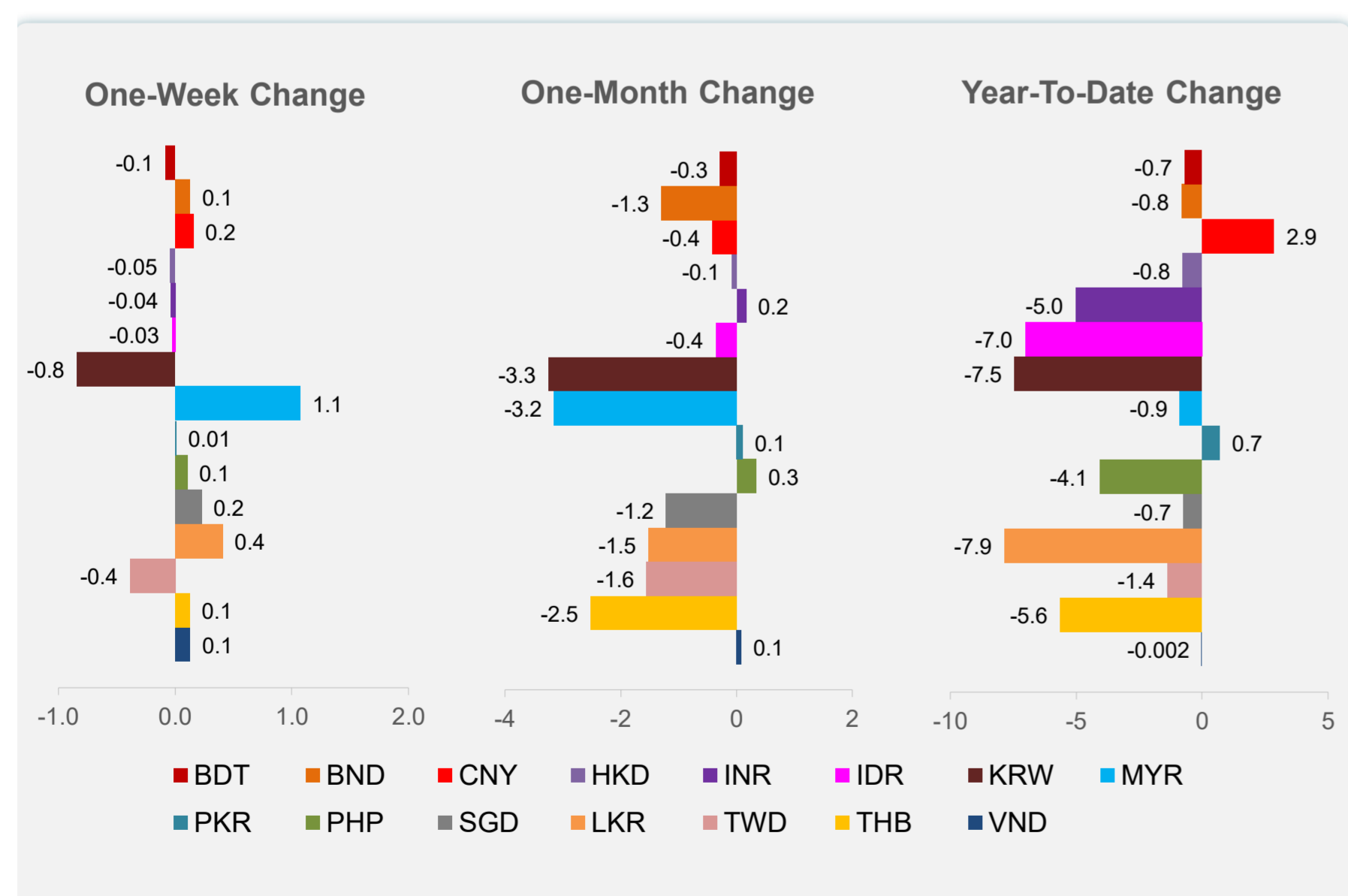
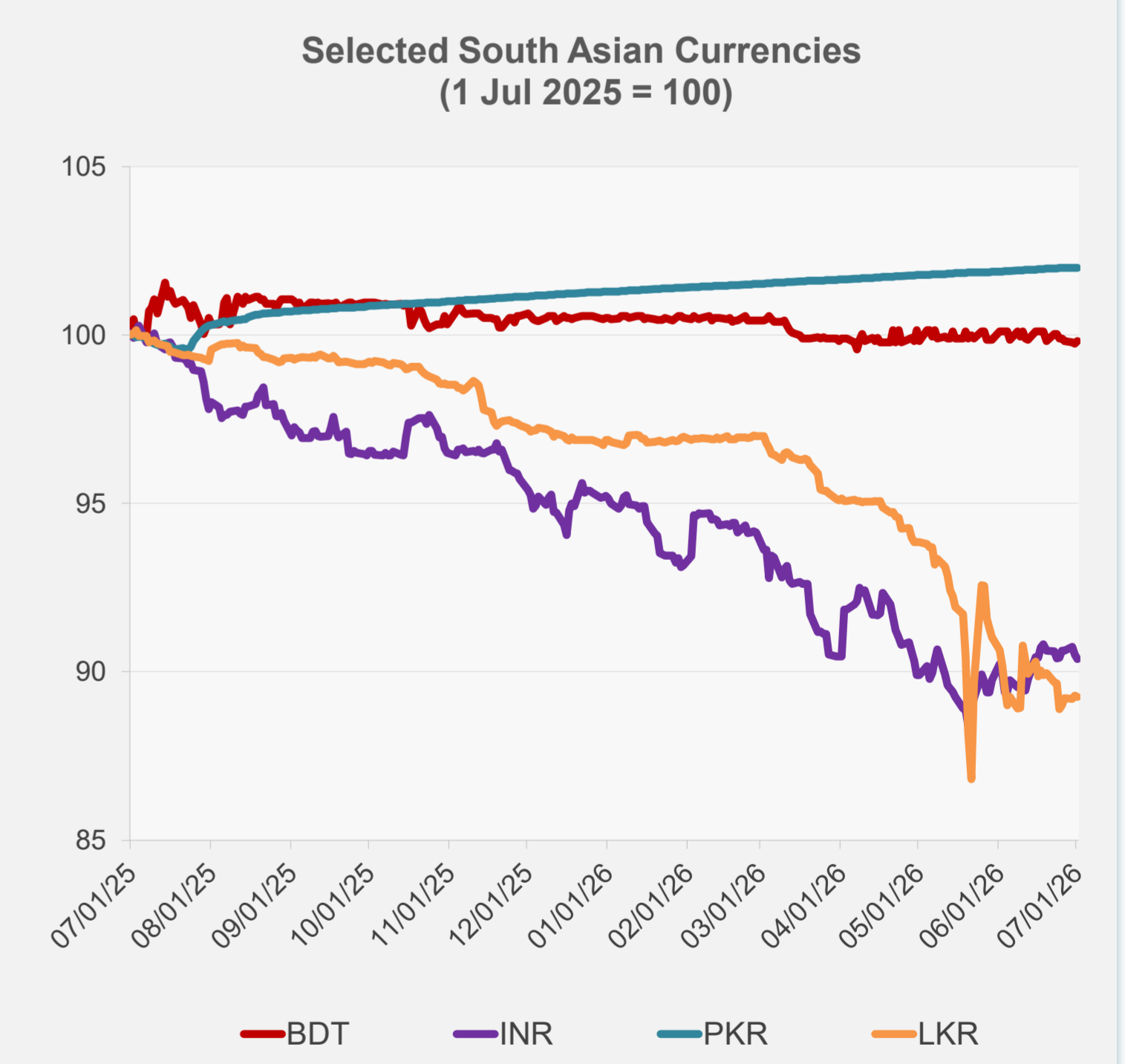
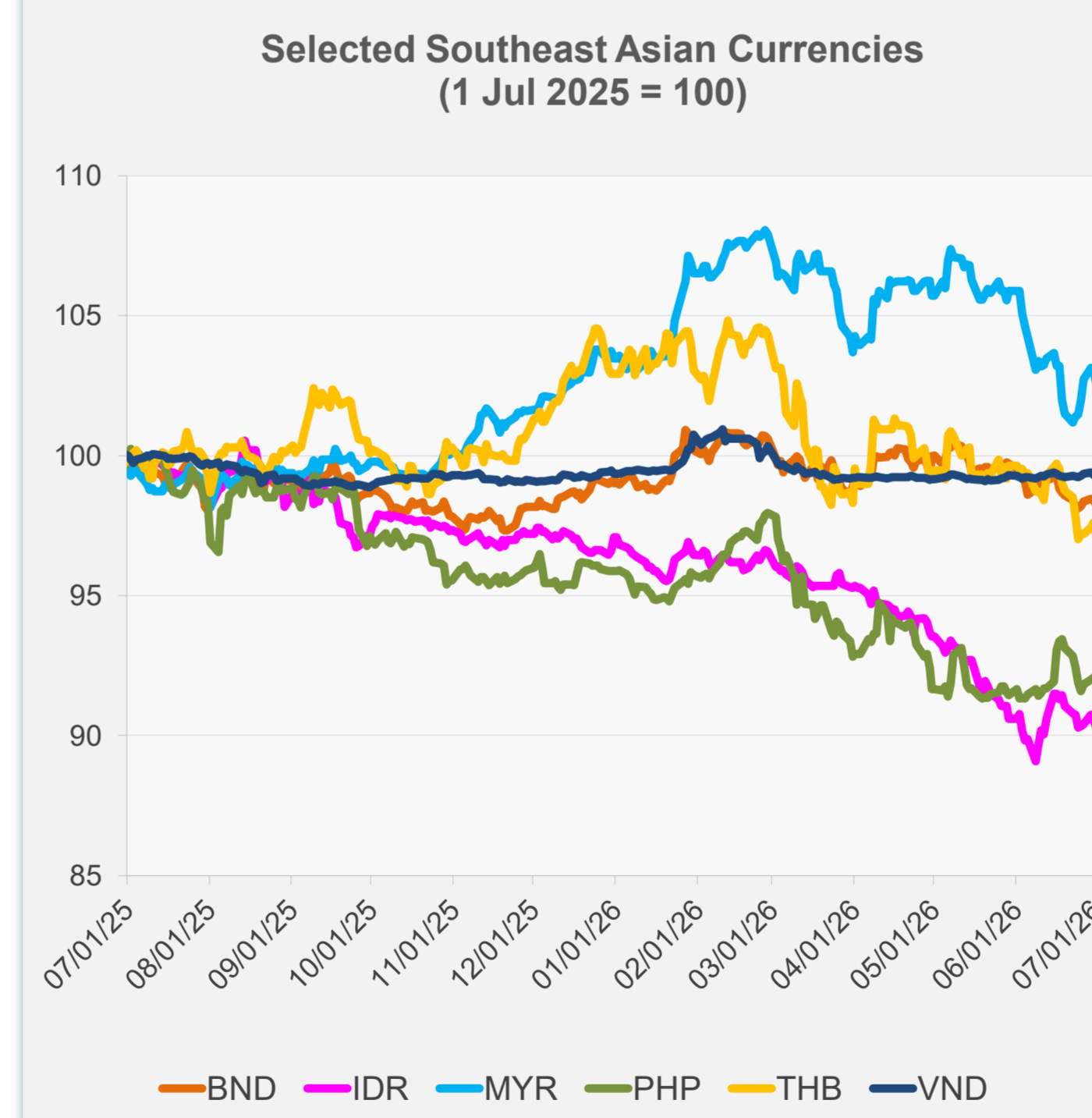


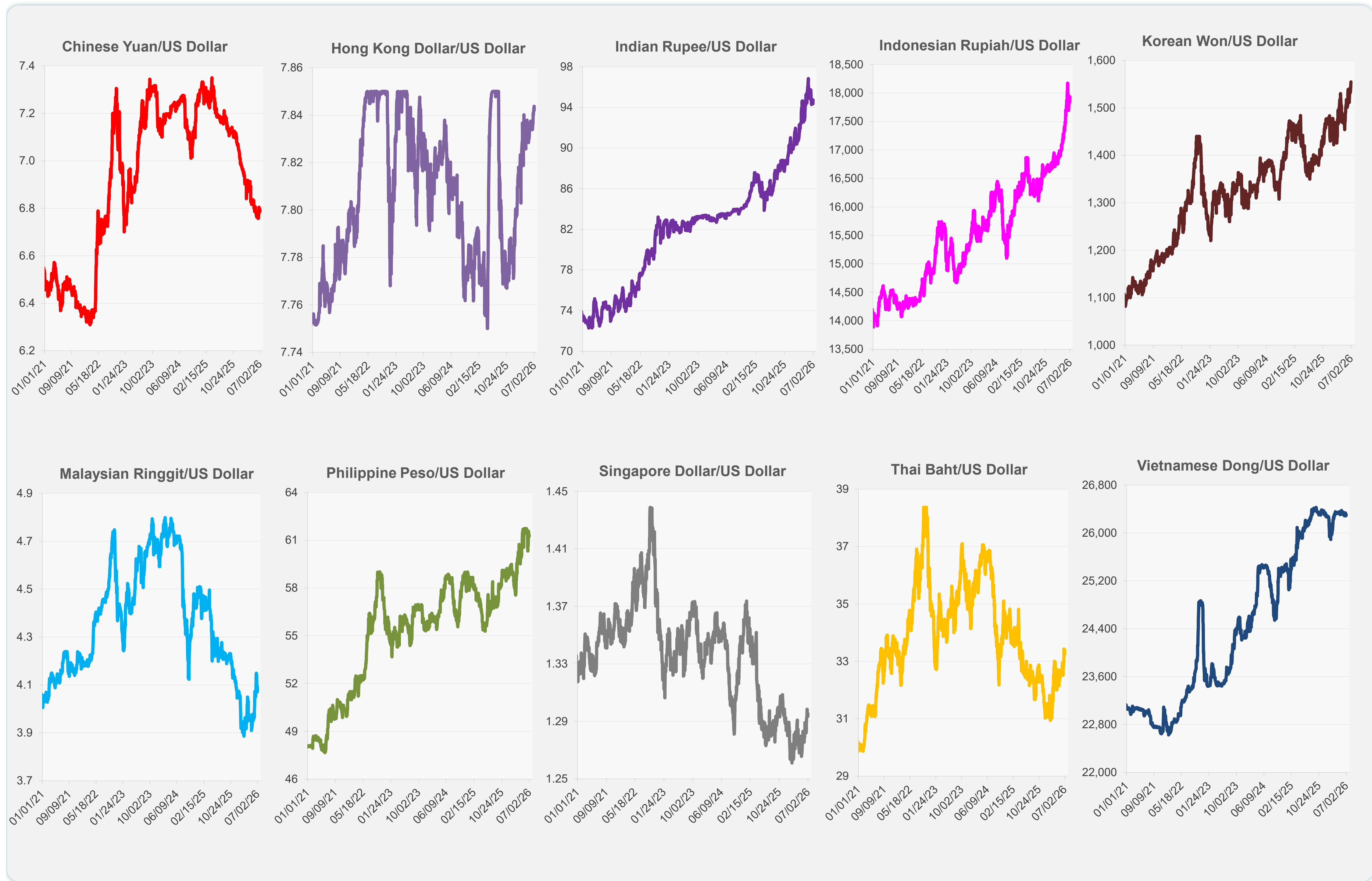
	Latest Closing	% change from Previous Day	% change from 01-Jan-26
Euro	0.88	-0.35	-2.99
Japanese yen (JPY)	162.68	-0.26	-4.12
Bangladeshi taka (BDT)	123.10	0.08	-0.69
Brunei dollar (BND)	1.30	-0.14	-0.82
Chinese yuan (CNY)	6.79	-0.12	2.86
Hong Kong dollar (HKD)	7.84	-0.02	-0.77
Indian rupee (INR)	94.73	-0.14	-5.02
Indonesian rupiah (IDR)	17,935.00	-0.31	-7.03
Korean won (KRW)	1,554.90	-0.35	-7.45
Malaysian ringgit (MYR)	4.09	-0.40	-0.88
Pakistan rupee (PKR)	278.15	0.00	0.70
Philippine peso (PHP)	61.29	-0.10	-4.05
Singapore dollar (SGD)	1.30	-0.15	-0.73
Sri Lanka rupee (LKR)	336.00	-0.04	-7.86
Taipei,China NT dollar (TWD)	31.87	-0.12	-1.37
Thai baht (THB)	33.39	-0.50	-5.64
Vietnamese dong (VND)	26,300.50	0.04	0.00



NIE = Newly Industrialized Economies

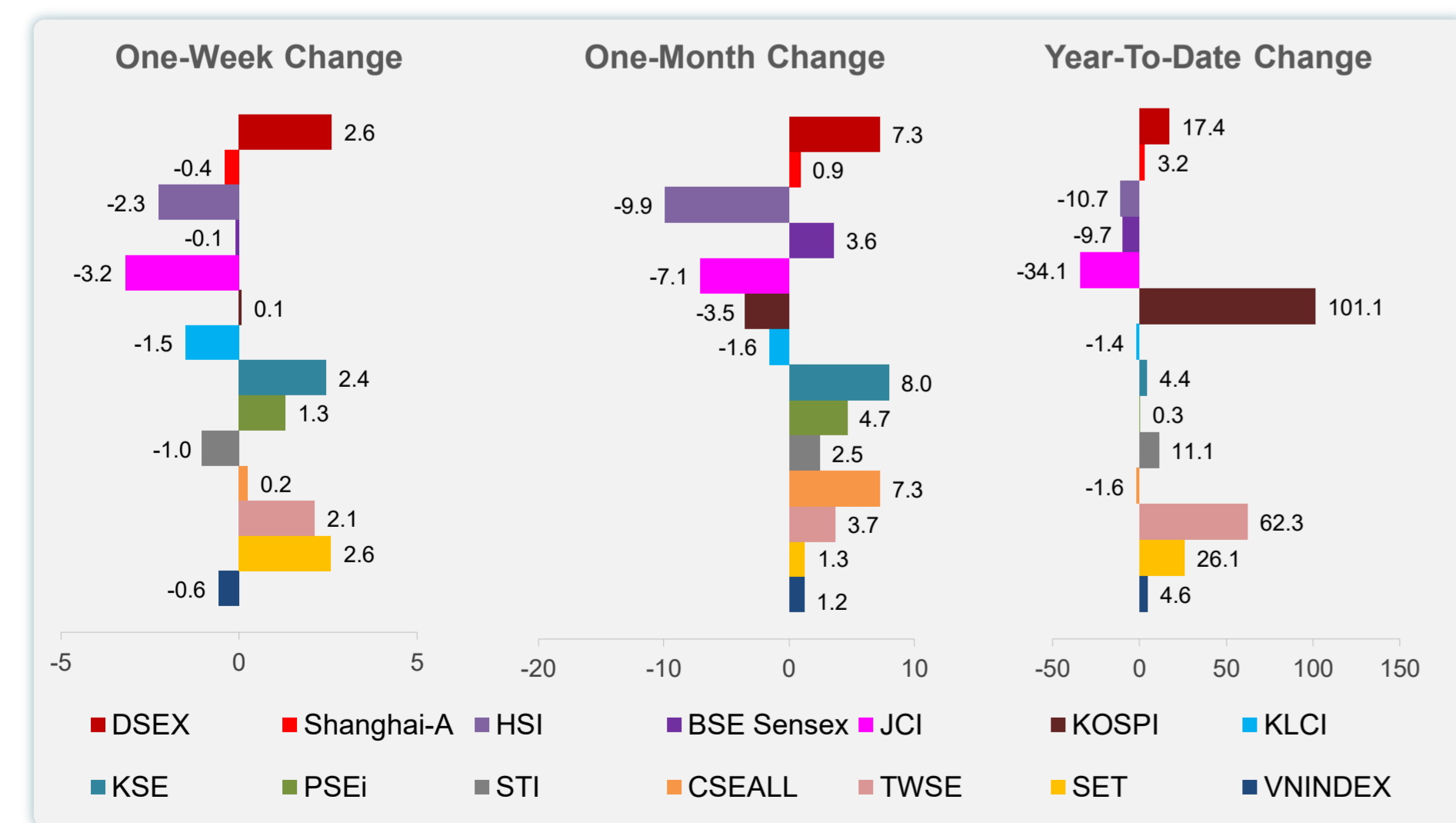
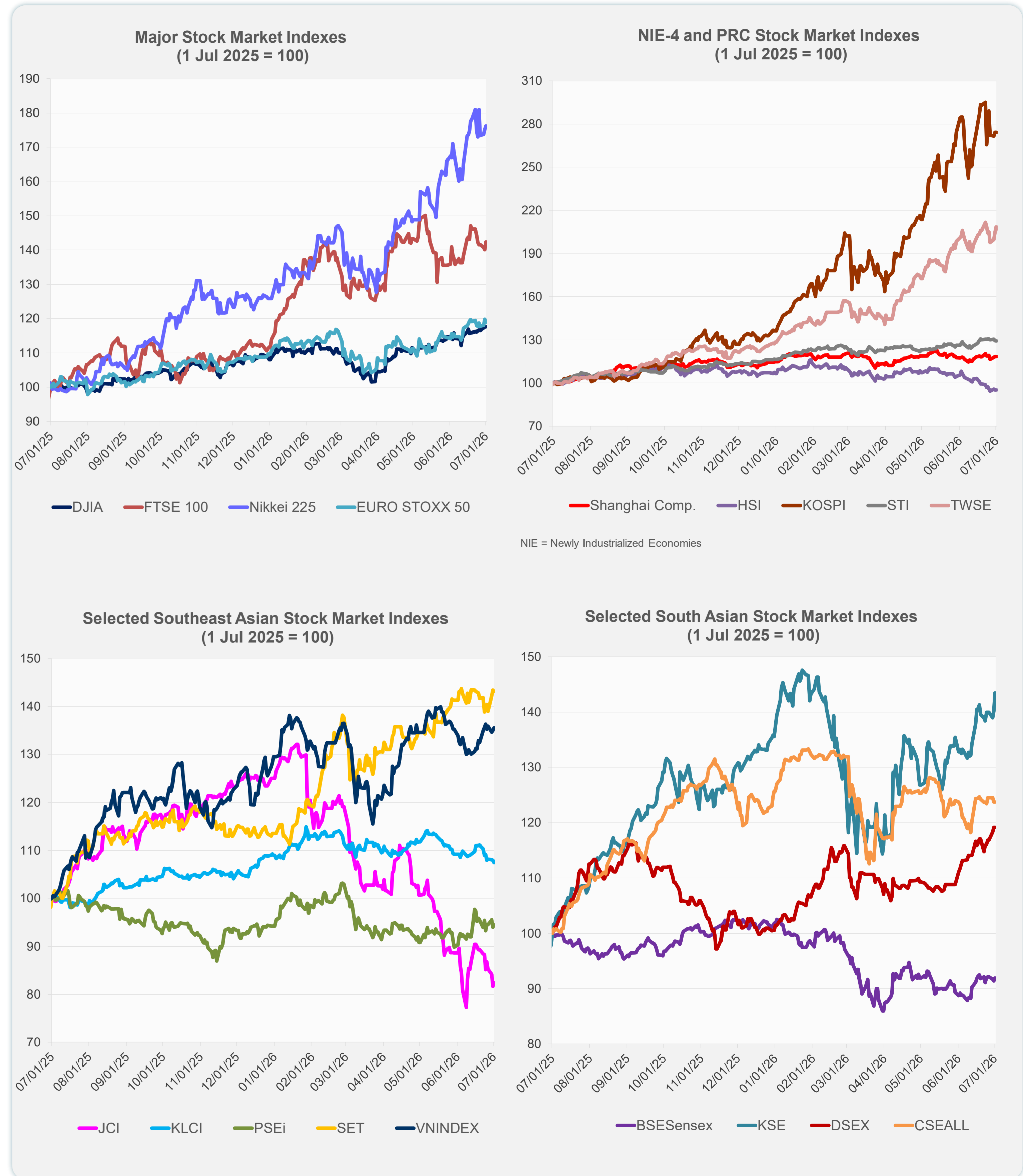


Note: Negative/Decreasing values indicate depreciation of local currency, and positive/increasing values indicate appreciation.
Source: ADB calculations using data from Bloomberg and Haver Analytics.

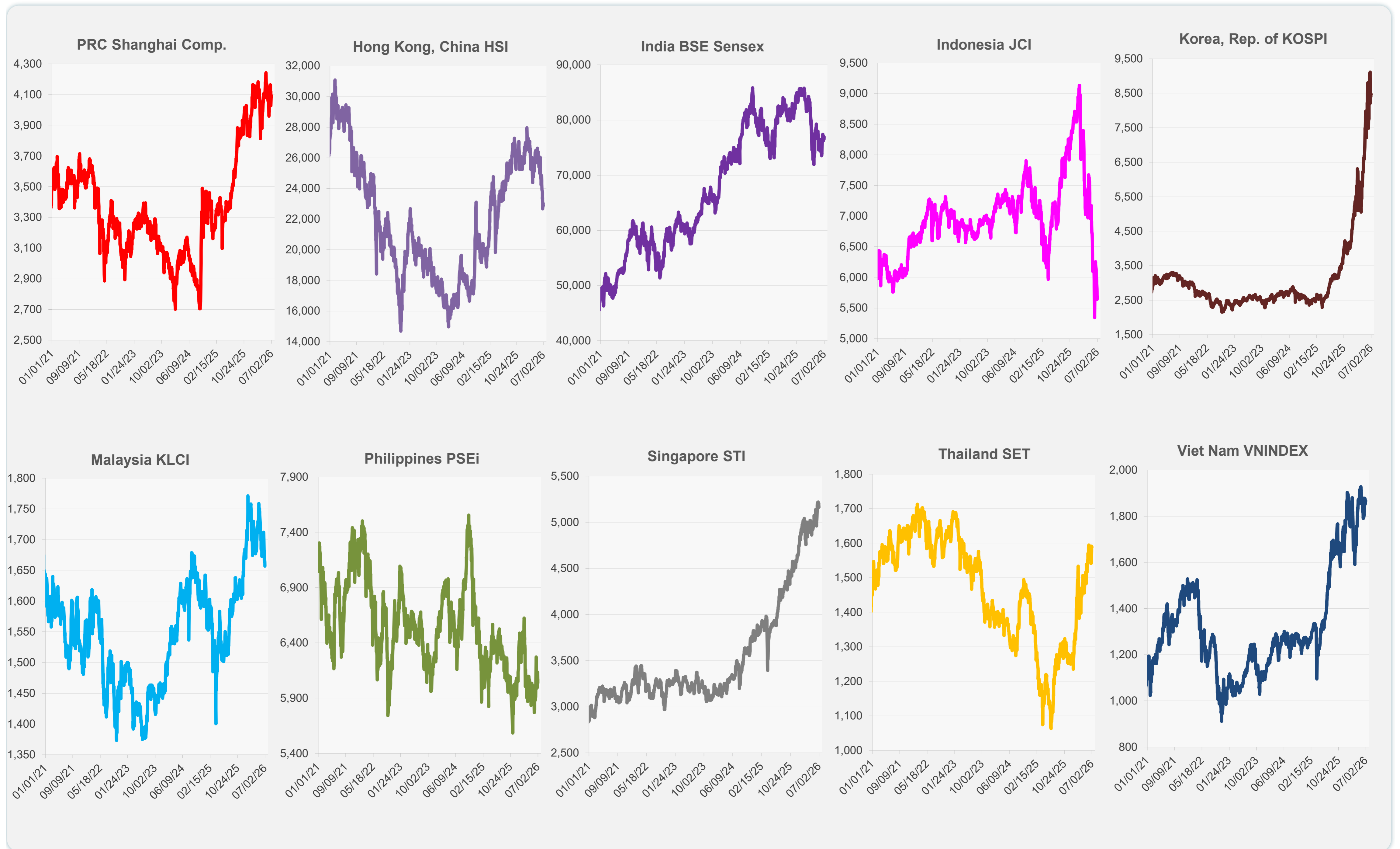


Source: Haver Analytics.

	Latest Closing	% change from Previous Day	% change from 01-Jan-26
US Dow Jones Ind Avg	52,305.24	-0.03	8.83
US NASDAQ	26,040.03	-0.66	12.04
US S&P 500	7,483.23	-0.22	9.32
UK FTSE 100	14,350.60	1.62	27.43
EURO STOXX 50	6,282.50	-0.72	8.48
Japan NIKKEI 225	70,474.96	0.59	40.00
Bangladesh DSEX	5,762.83	0.00	17.35
PRC Shanghai Comp.	4,094.40	0.00	3.16
Hong Kong, China HSI	22,881.02	0.00	-10.73
India BSE Sensex	76,922.64	0.58	-9.70
Indonesia JCI	5,695.12	0.92	-34.14
Korea, Rep. of KOSPI	8,476.48	0.00	101.14
Malaysia KLCI	1,656.83	-0.43	-1.39
Pakistan KSE 100	184,222.90	2.30	4.39
Philippines PSEi	6,069.26	0.53	0.27
Singapore STI	5,161.50	-0.18	11.09
Sri Lanka CSEALL	22,263.28	0.00	-1.60
Taipei, China TWSE	47,018.99	1.94	62.34
Thailand SET	1,588.23	-0.19	26.08
Viet Nam VNINDEX	1,867.21	0.39	4.64



Sources: ADB calculations using data from Bloomberg and CEIC Data Company.

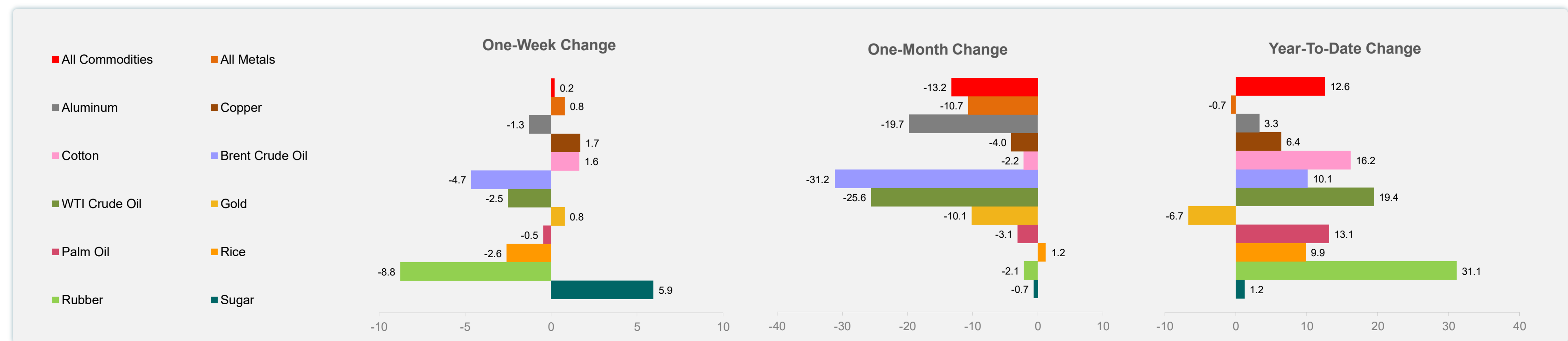
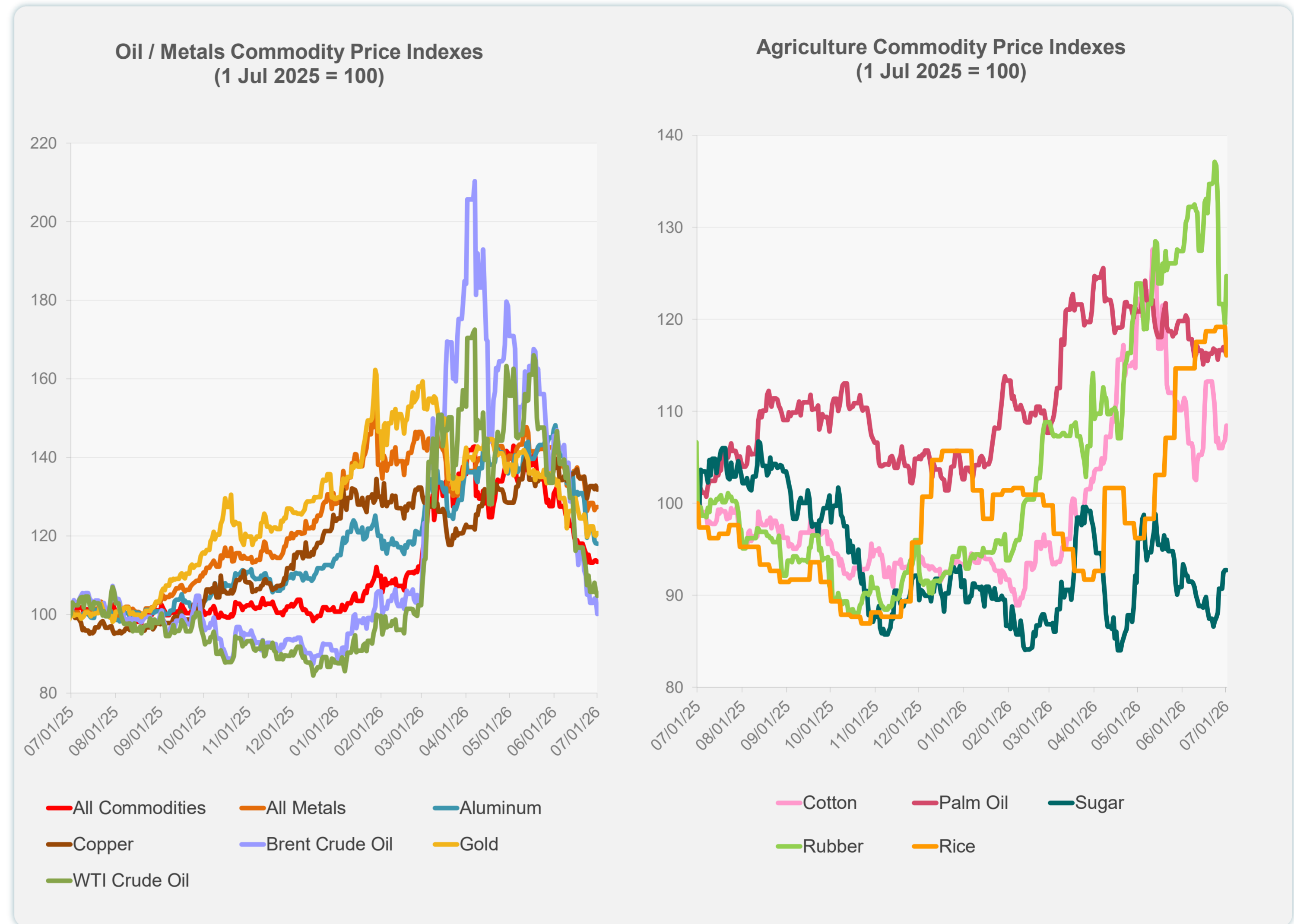


Sources: ADB calculations using data from Bloomberg and CEIC Data Company.

Daily Market Watch
COMMODITY PRICES

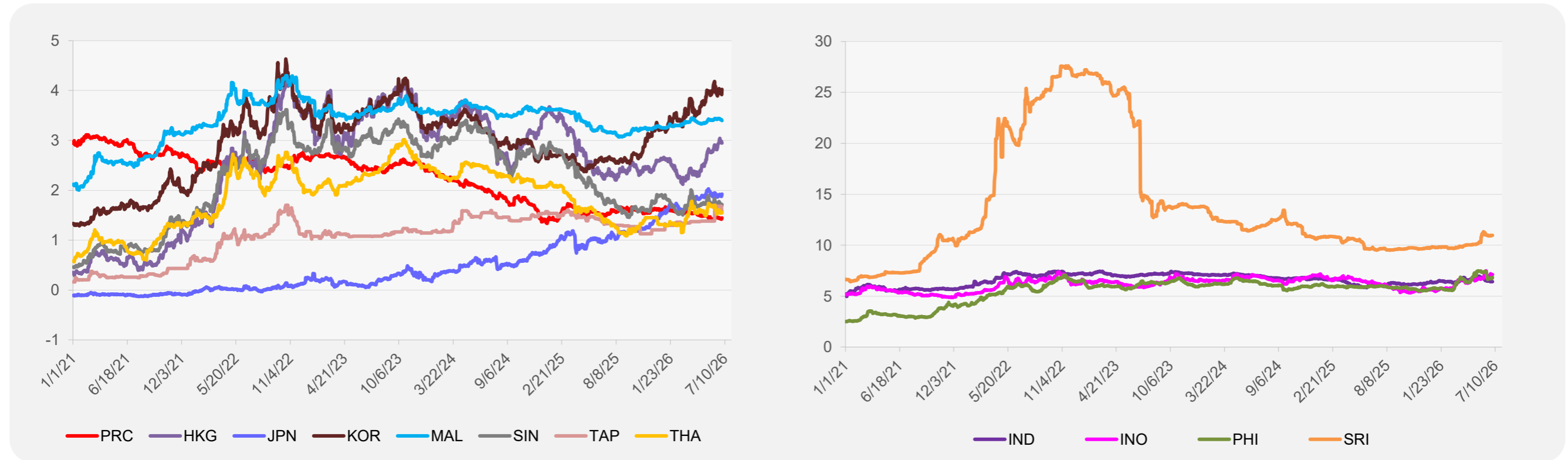
	Unit	Latest Closing	% change from Previous Day	% change from 01-Jan-26
S&P All Commodities	US\$	617.44	-0.32	12.56
S&P All Metals	US\$	440.87	0.12	-0.65
Aluminum	US\$/metric ton	3,066.20	-0.12	3.31
Copper	US\$/metric ton	13,249.24	-0.75	6.39
Cotton	US cents/lb	72.05	1.49	16.17
Brent Crude Oil	US\$/barrel	68.77	-3.85	10.13
WTI Crude Oil	US\$/barrel	68.58	-1.32	19.44
Gold	US\$/troy oz	4,030.65	0.56	-6.68
Palm Oil	US\$/metric tonne	1,095.80	-0.47	13.13
Rice ¹	US\$/metric ton	490.00	-2.58	9.87
Rubber ²	US\$/kg	281.90	4.41	31.12
Sugar	US cents/lb	14.97	0.00	1.22

¹ Latest closing price from 24 June 2026.
² Singapore Exchange, Ribbed Smoked Sheet Rubber.

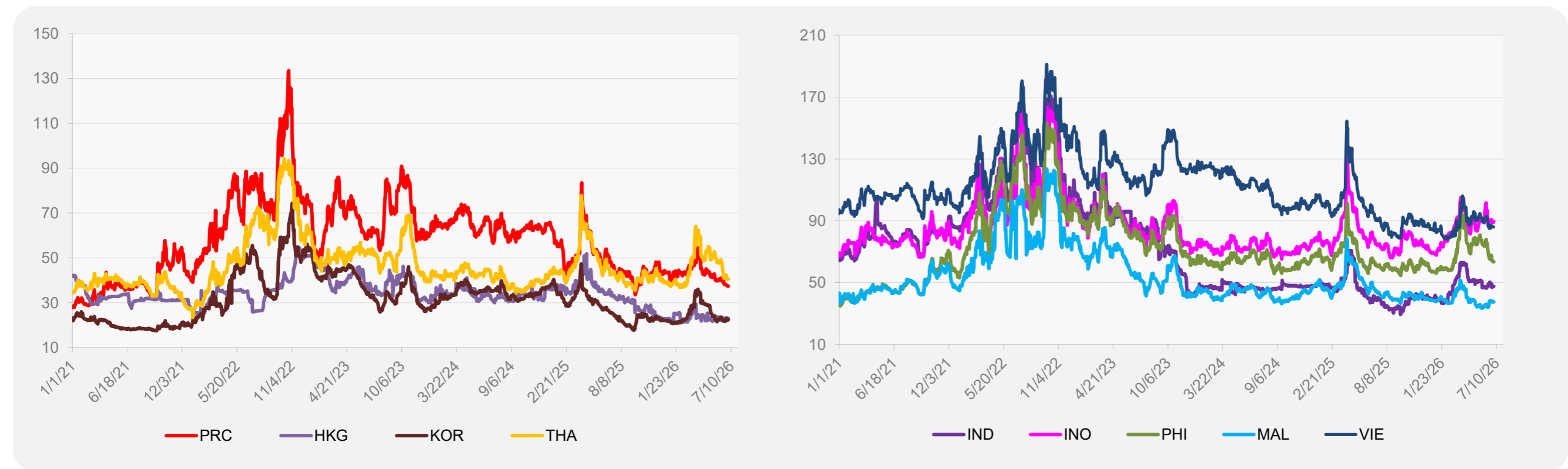


Source: ADB calculations using data from Bloomberg.

5-YEAR LOCAL CURRENCY GOVERNMENT BOND YIELDS (%)



5-YEAR CREDIT DEFAULT SWAP¹



¹ In USD and based on sovereign bonds.
Source: ADB calculations using data from Bloomberg.